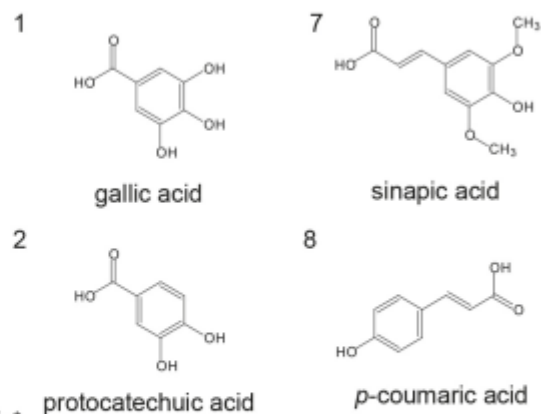
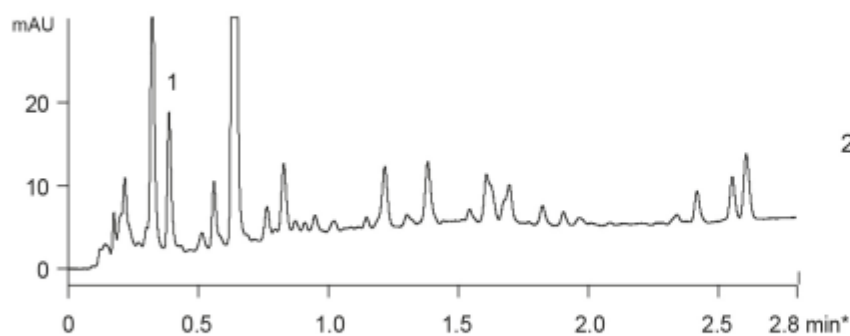
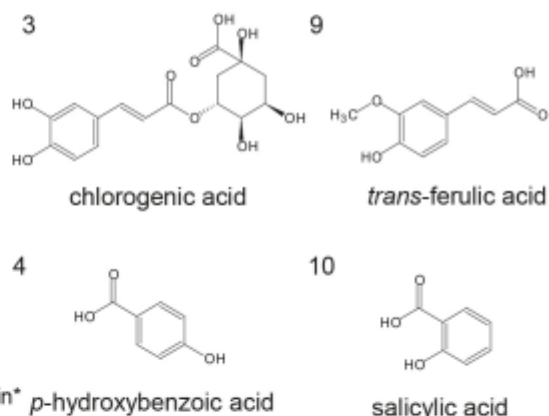
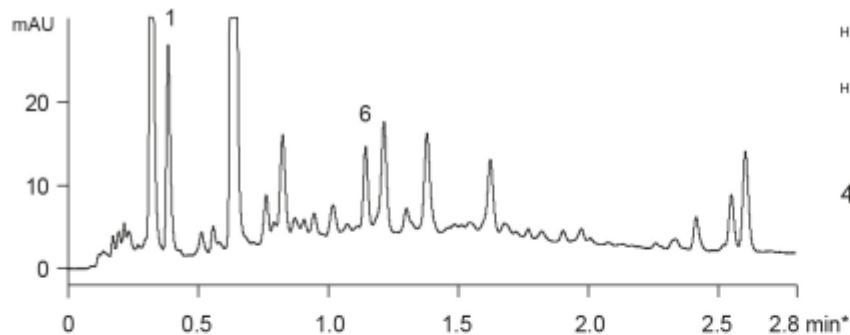


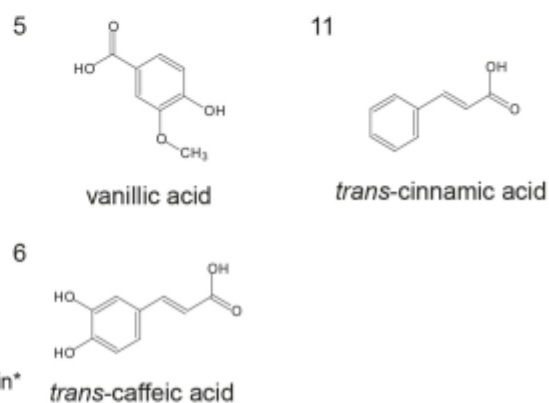
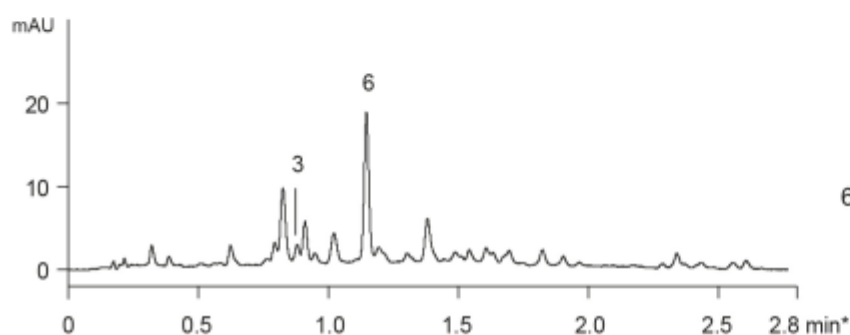
A) UV at 254 nm



B) UV at 280 nm



C) UV at 320 nm



- Column □ : YMC-UltraHT Pro C18 (2 μm, 12 nm)
50 X 2.0 mm I.D.
- Eluent □ □ : A) water / HCOOH (200/0.4)
B) acetonitrile / methanol / THF / water / HCOOH (43.5/43.5/13/100/0.4)
20-100%B (0-2.8 min)
- Flow rate □ : 0.5 mL/min
- Temperature □ : 40 °C
- Detection □ : A) UV at 254 nm, B) UV at 280 nm, C) UV at 320 nm
- Injection □ : 2 μL
- Samples □ : hot water extract of tea leaves (5 mg/mL)