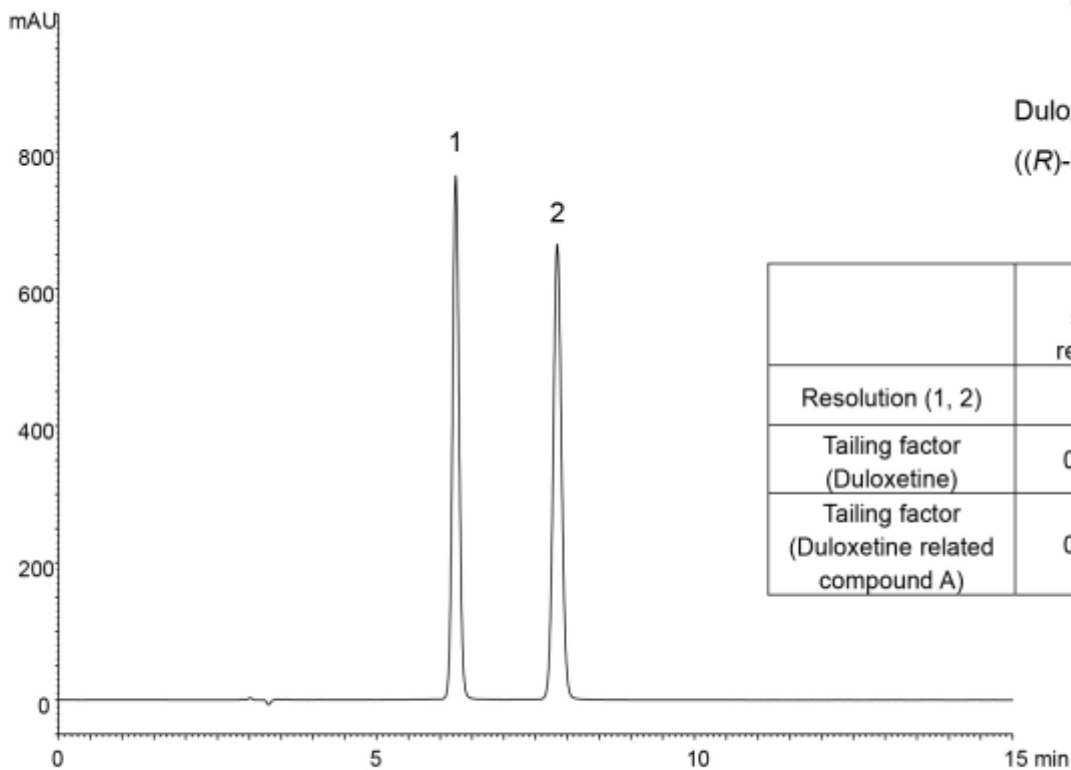
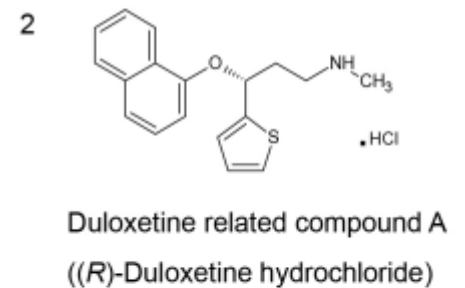
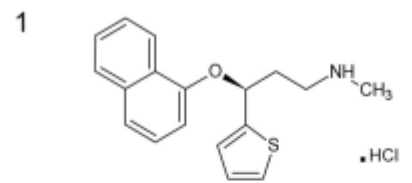


System suitability solution*

(0.1 mg/mL Duloxetine hydrochloride, 0.1 mg/mL Duloxetine related compound A)



	System suitability requirement	Result
Resolution (1, 2)	≥ 3.5	7.4
Tailing factor (Duloxetine)	0.8 ~ 1.5	1.1
Tailing factor (Duloxetine related compound A)	0.8 ~ 1.5	1.0

Column : YMC CHIRAL Cellulose-C (5 μ m)
250 X 4.6 mm I.D.

Eluent : *n*-hexane/2-propanol/diethylamine (83/17/0.2)

Flow rate : 1.0 mL/min

Temperature : 40°C

Detection : UV at 230 nm

Injection : 10 μ L

(The United States Pharmacopeia 37th; Limit of Duloxetine related compound A)

* System suitability solution was prepared from duloxetine hydrochloride and duloxetine related compound A supplied as reagents for laboratory use.