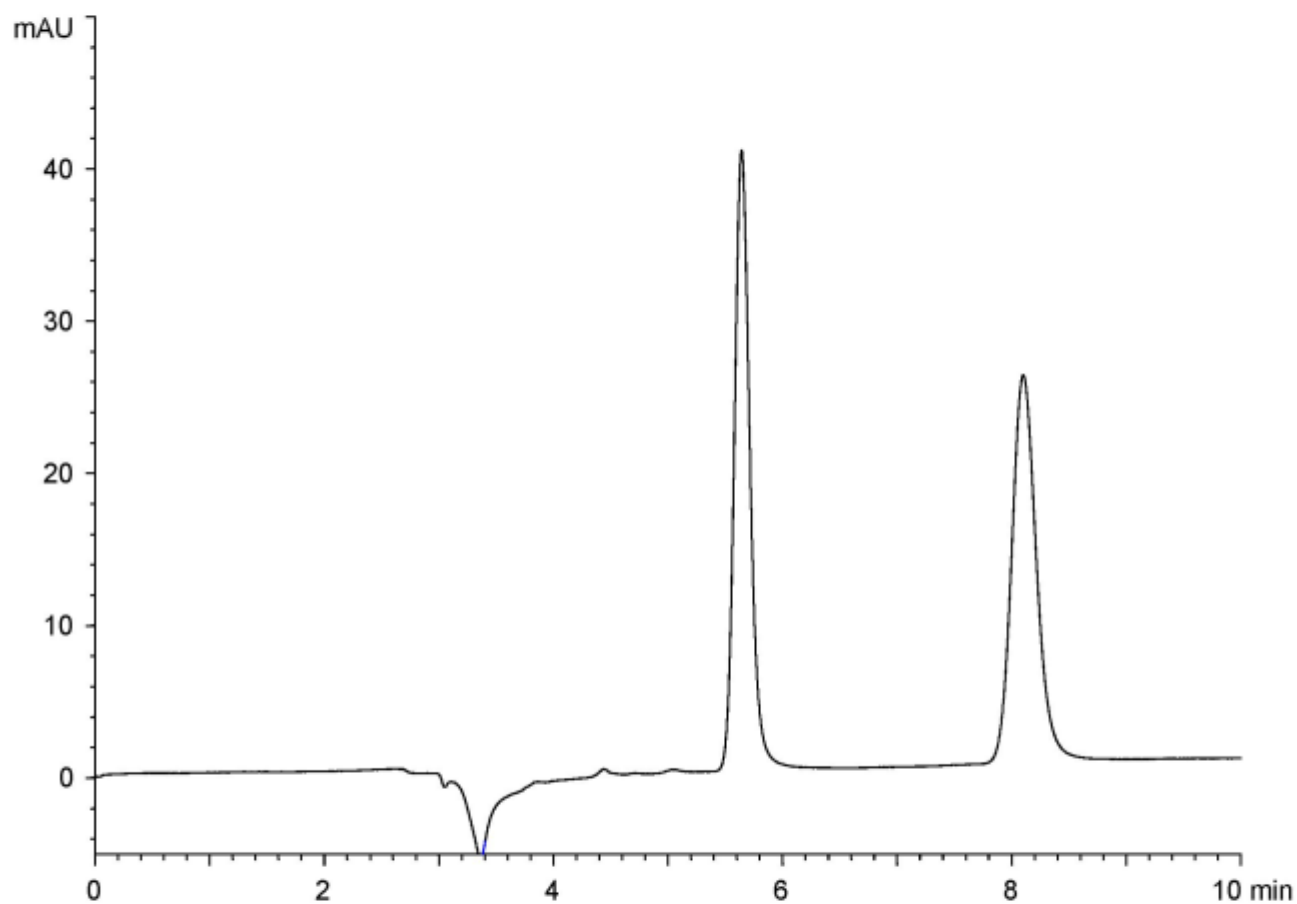


α	1.9
R_s	7.9



Column : CHIRAL ART Cellulose-SC (5 μ m)
 250 X 4.6 mm I.D.
 Eluent : ethyl acetate/2-propanol/diethylamine (95/5/0.1)
 Flow rate : 1.0 mL/min
 Temperature : 25°C
 Detection : UV at 290 nm
 Injection : 5 μ L (100 μ g/mL)