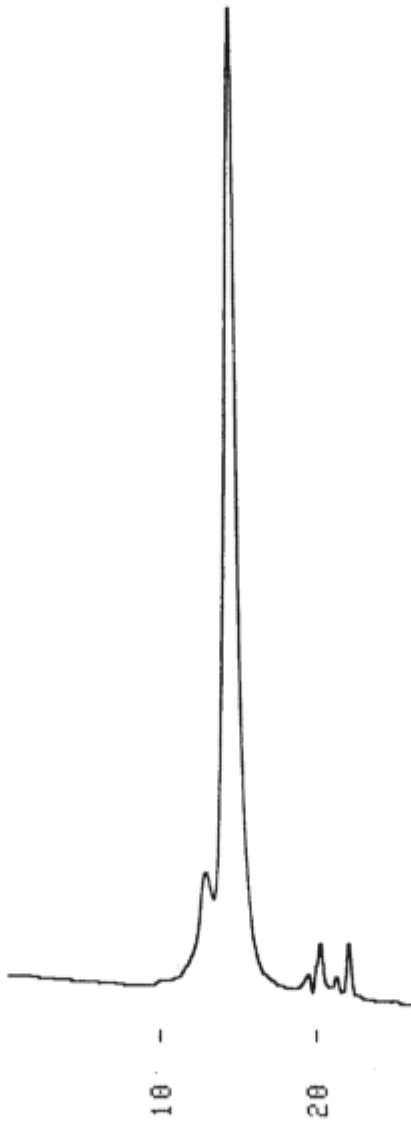


1. Normal human IgA



Column	: YMC-Pack Diol-300 500 × 8.0 mm I.D.
Eluent	: 0.1M NaH ₂ PO ₄ - Na ₂ HPO ₄ (pH 6.8) containing 0.1M Na ₂ SO ₄
Flow rate	: 1.0 mL/min
Temperature	: ambient (24 °C)
Detection	: UV at 280 nm, 0.02 AUFS
Injection	: 20 μL (1.0 mg/mL)