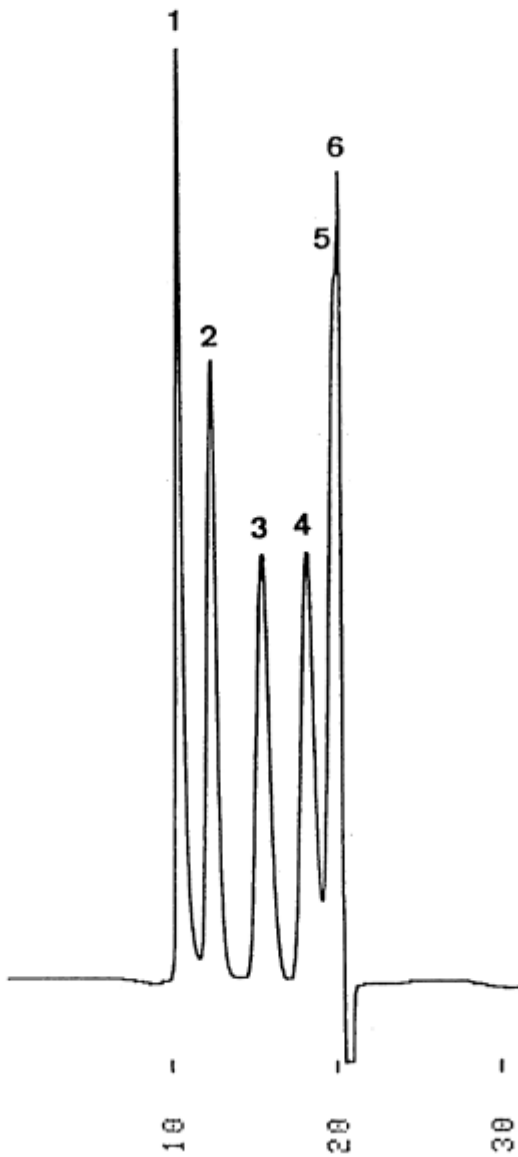


- 1.PEG #20,000 (MW 20,000)
- 2.PEG #6,000 (MW 8,400)
- 3.PEG #4,000 (MW 3,350)
- 4.PEG #1,000 (MW 1,000)
- 5.PEG #300 (MW 300)
- 6.Ethyleneglycol (MW 62)



Column : YMC-Pack Diol-120  
500 × 8.0 mm I.D.  
Eluent : acetonitrile/water(10/90)  
Flow rate : 1.0 mL/min  
Temperature : ambient (22 °C)  
Detection : RI, 64 x 10<sup>-6</sup> RIU/FS  
Injection : 100 μL (1.67 mg/mL)