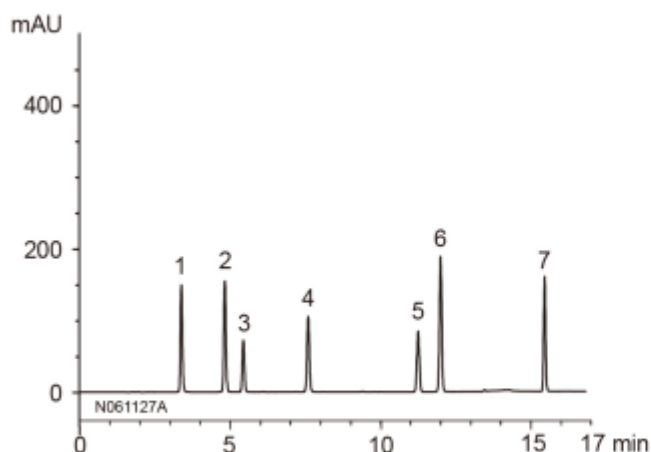
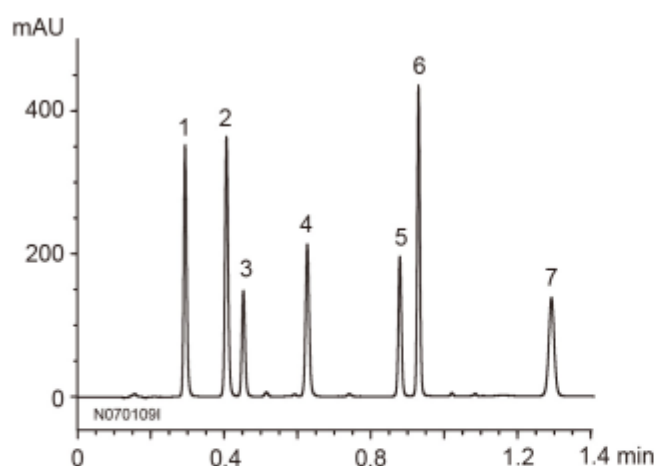


Conventional LC method

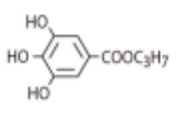
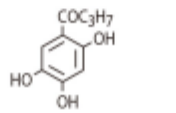
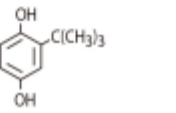
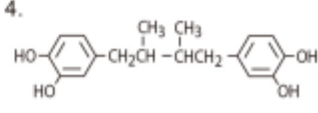
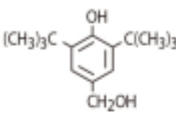
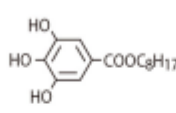
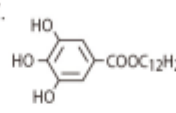


Column : YMC-Pack *Pro* C18 (5 μ m, 12nm)
150 X 4.6 mm I.D.
Flow rate : 1.0 mL/min
Gradient : 45-70%B (0-9 min),
70-95%B (9-12 min),
95%B (12-17 min)
Injection : 5 μ L

Ultra-fast LC method



Column : YMC-UltraHT *Pro* C18 (2 μ m, 12nm)
50 X 2.0 mm I.D.
Flow rate : 0.8 mL/min
Gradient : 45-70%B (0-0.75 min),
70-95%B (0.75-1 min),
95%B (1-1.4 min)
Injection : 1 μ L

1. 
n-Propyl gallate (PG)
2. 
2,4,5-Trihydroxybutyrophenone (THBP)
3. 
tert-Butylhydroquinone (TBHQ)
4. 
Nordihydroguaiaretic acid (NDGA)
5. 
4-Hydroxymethyl-2,6-di-*tert*-butylphenol (HMBP)
6. 
n-Octyl gallate (OG)
7. 
n-Dodecyl gallate (DG)

Eluent : A) water / TFA (100/0.1)
B) acetonitrile / methanol / TFA (75/25/0.1)
Temperature : 30°C
Detection : UV at 280 nm
Sample : 0.05-0.3 mg/mL