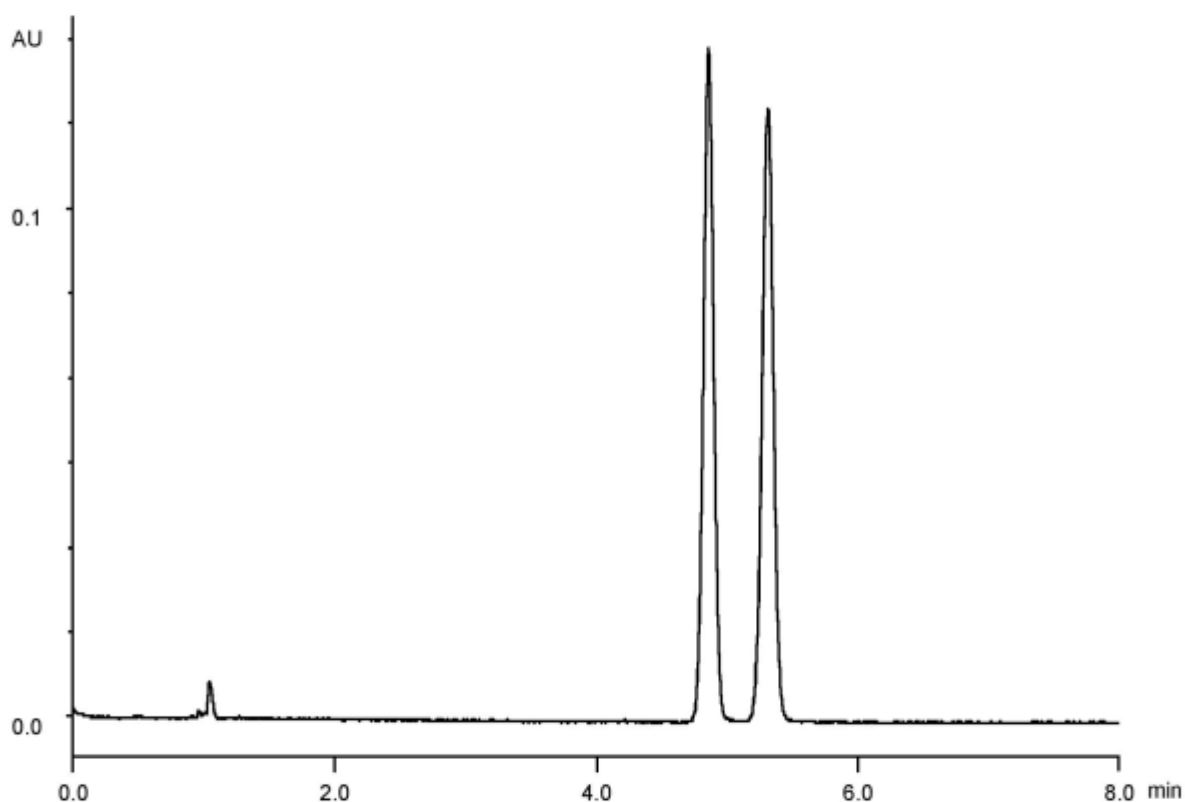


$\alpha$	1.1
$R_s$	3.0



Column : Alcyon SFC CSP Cellulose-SJ (5  $\mu$ m)  
 250 X 4.6 mm I.D.  
 Eluent : CO<sub>2</sub>/methanol/acetonitrile (90/5/5)  
 Flow rate : 3.0 mL/min  
 Temperature : 35°C  
 Detection : UV at 210 nm  
 Backpressure : 13.8 MPa (2000 psi)  
 Injection : 2  $\mu$ L (1 mg/mL)