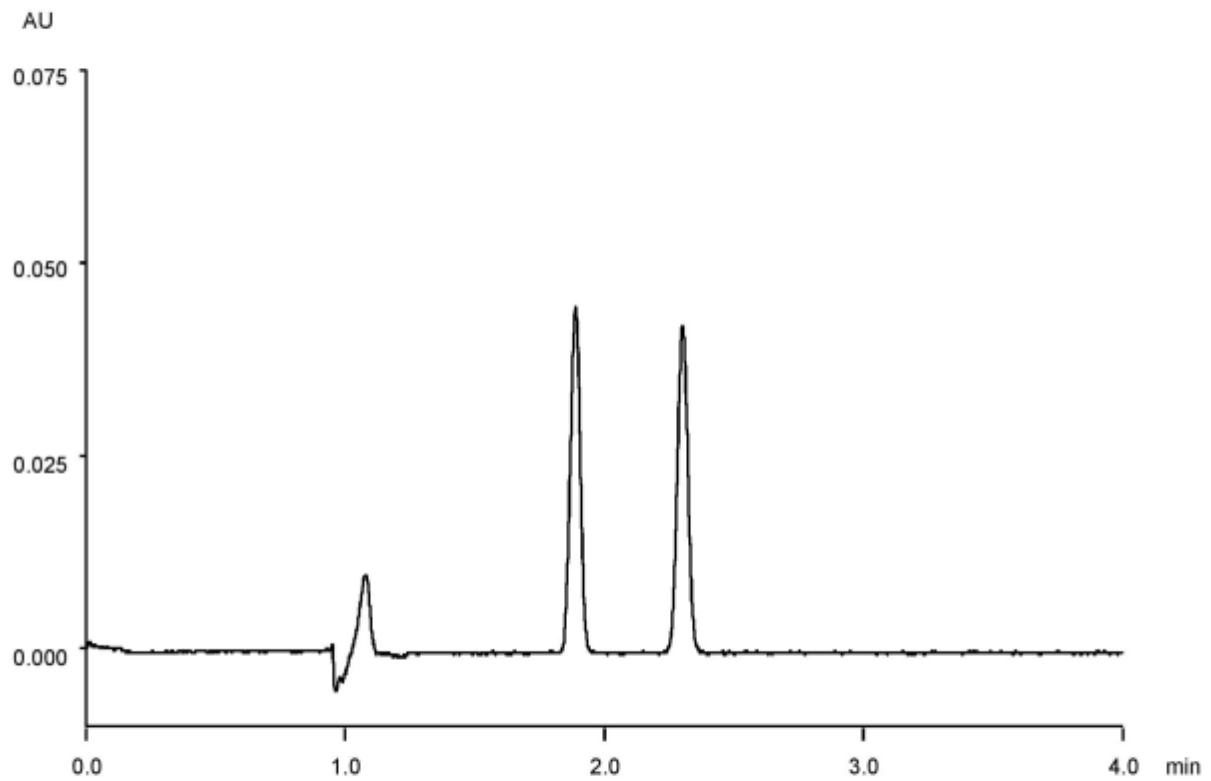


$\alpha$	1.5
Rs	5.6



Column : Alcyon SFC CSP Cellulose-SC (5  $\mu$ m)  
250 X 4.6 mm I.D.  
Eluent : CO<sub>2</sub>/methanol (90/10)  
Flow rate : 3.0 mL/min  
Temperature : 35°C  
Detection : UV at 220 nm  
Backpressure : 13.8 MPa (2000 psi)  
Injection : 10  $\mu$ L (0.5 mg/mL)