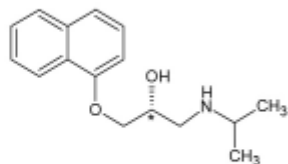
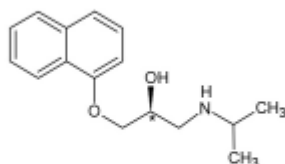


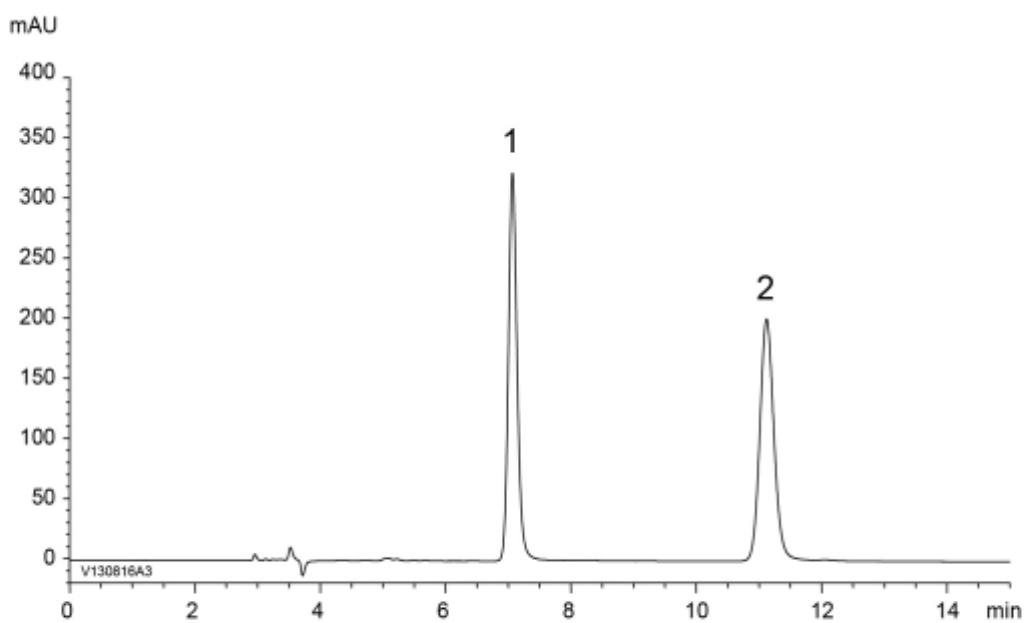
1

*(R)*-Propranolol

2

*(S)*-Propranolol

$\alpha$	2.0
$R_s$	12.6



Column : YMC CHIRAL Cellulose-C (5  $\mu$ m)  
 250 X 4.6 mm I.D.  
 Eluent : *n*-hexane/2-propanol/diethylamine (80/20/0.1)  
 Flow rate : 1.0 mL/min  
 Temperature : 25°C  
 Detection : UV at 230 nm  
 Injection : 10  $\mu$ L (0.1 mg/mL)